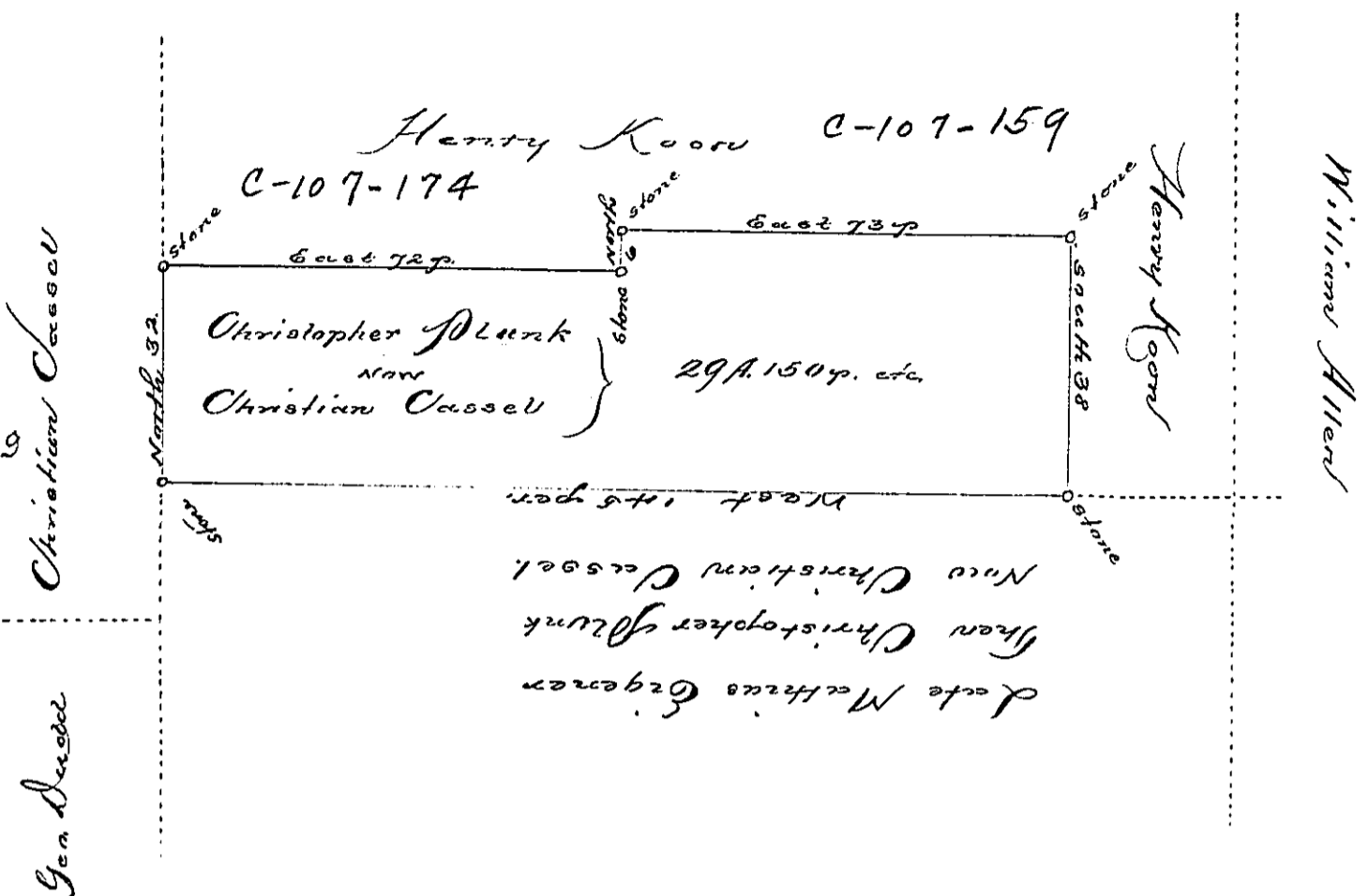


Page - 289



A Draught of a Tract of Land, Situate in Salisbury Township in the County of Northampton and Province of Pennsylvania, Containing Twenty-nine acres and 150 perches of Land together with the usual allowance at six per Cent for Roads. That was surveyed unto Christian Cassel in pursuance of a warrant granted unto Christopher Plunk Christian Plunk. Dated at Philadelphia on the 3rd Day of October Anno 1751. Surveyed on the 13 April Anno 1757.

By order of William Parsons, Esquire,
 J. David Shultz

IN TESTIMONY that the above is a copy of the original remaining on file in the Department of Internal Affairs of Pennsylvania, made conformably to an Act of Assembly approved the 16th day of February, 1833, I have hereunto set my Hand and caused the Seal of said Department to be affixed at Harrisburg, this

...seventh... day of April, 1896,

James W. Latta
 Secretary of Internal Affairs.